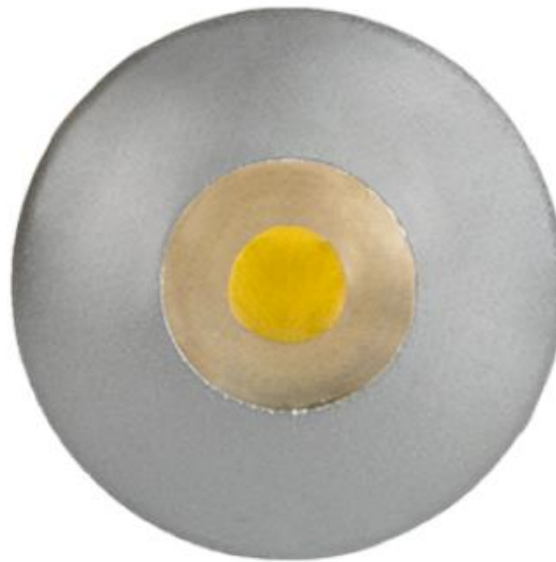


LED CABINET LIGHT CAB-17



Technical data:

Rated voltage:	230VAC
Power:	1W
Power Supply:	Control gear – driver for 12VDC (not included in the set)
Color temperature:	White; Warm white
Type of LED:	High power
Light source:	Epistar Taiwan
Luminous flux:	110lm
Housing:	ABS D30x20mm
Colour of the housing:	Silver
Diffuser:	ABS
Long life:	30000h
Beam angle:	120°
Colour rendering index:	Ra≥80
Protection against dust and moisture:	IP20

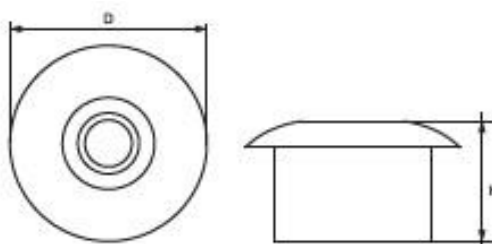
Product benefits

- *Safety, low voltage operation*
- *Uniform and gentle illumination*
- *Low power consumption*
- *Repeated switch on/off does not affect life span*
- *Instant light with maximum luminous flux*
- *Environmentally friendly - no mercury and lead*
- *No ultraviolet and infrared rays*

Areas of application

- *Kitchen facilities*
- *Service areas*
- *Residential buildings*
- *Retail Showcases and counters*

Variants and dimensions

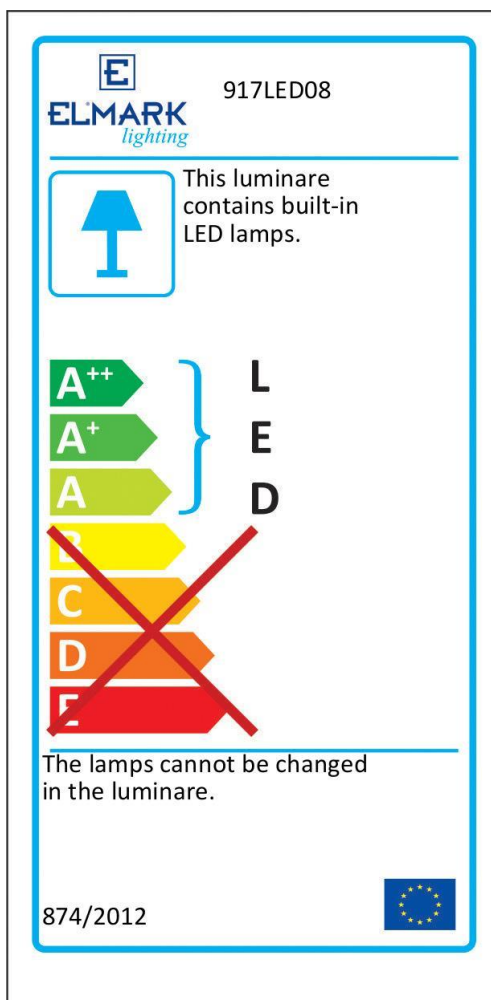


Watt	Lumen (lm)	Colour temp.	Colour body	Size (mm)		Catalogue number	Packing (pcs)
				Diameter	Height		
1W	110	white	silver	30	20	917LED08	200
1W	110	warm white	silver	30	20	917LED18	200

Barcodes

3800131185709	917LED08
3800131185716	917LED18

Energy efficiency



Standards

- EN 60598-1 • EN 60598-2-1 • EN 55015 • EN 61547 • EN 61000-3-2 •

